

LAKE LOCAL AGENCY FORMATION COMMISSION

A Resolution Making Determinations and Approving A Sphere of Influence Update for the Lake County Watershed Protection District

WHEREAS, Government Code Section 56425 requires each Local Agency Formation Commission to adopt and periodically review and update a sphere of influence for each local governmental agency within its jurisdiction; and

WHEREAS, the Lake Local Agency Formation Commission, in compliance with the aforementioned requirement, is providing a “plan for the probable physical boundaries and service area” for the Lake County Watershed Protection District; and

WHEREAS, the Commission has set the initial hearing date of May 18, 2016 for the update of the Sphere of Influence for the Lake County Watershed Protection District and has noticed this hearing at the times and as otherwise prescribed by Government Code Section 56427, *et seq.*; and

WHEREAS, the Commission has heard and adopted a Municipal Services Review of services provided by the Lake County Watershed Protection District in accordance with Gov. Code section 56430; and

WHEREAS, the Commission has reviewed and considered the proposed Sphere of Influence update report and the proposed Sphere of Influence Update map which are attached hereto and incorporated herein; and

WHEREAS, Lake LAFCO prepared and a notice of exemption for such action; and

WHEREAS, the Commission has considered those factors determined by it to be relevant to the proposed Sphere of Influence update, including, but not limited to, those factors specified in Government Code Section 56425, *et seq.*, and has heard from interested parties and considered requests for amendment and/or revision of the proposed updated sphere boundary, if any;

NOW, THEREFORE, BE IT RESOLVED that the Lake Local Agency Formation Commission does hereby find and determine as follows:

1. That the proposed sphere of influence update with respect to the Lake County Watershed Protection District complies with the provisions of Government Code Section 56000, *et seq.*
2. The Commission hereby adopts a Sphere of Influence for the Lake County Watershed Protection District. This sphere is to be countywide.
3. That, pursuant to Government Code Section 56425, the Commission makes and adopts those determinations set forth in the Sphere of Influence Study are attached hereto and incorporated herein.
4. The Commission has reviewed and adopts a Notice of Exemption prepared for this Sphere of Influence update and makes a specific finding that there is no substantial evidence in light of the whole record before Lake Local Agency Formation Commission that this Sphere Update for the Lake County Watershed Protection District may have a significant adverse effect on the environment.
5. Pursuant to Government Code Section 56425 (i) the Lake County Watershed Protection District is authorized to provide services within the territory set forth in Attachment “A” (countywide).

6. That the Sphere of Influence Update Report, Executive Officer's Report, and Map for the Lake County Watershed Protection District and updated Sphere is hereby adopted and approved as set forth in Attachment "A".

The foregoing resolution was duly passed by the Lake Local Agency Formation Commission at a regular meeting held on May 18, 2016, by the following roll call vote:

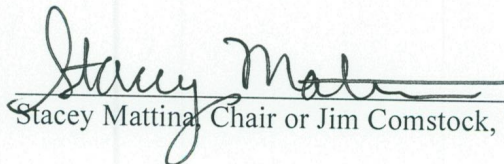
Ayes: Overton, Comstock, Farrington, Robey, Mills, Gellispie, and
Mattina

Noes:

Absentions:

Absent:

Signed and approved by me after its passage this 18th day of May 2016.


Stacey Mattina, Chair or Jim Comstock, Vice-Chair, Lake LAFCO

Attest:


John Benoit, Executive Officer
LAKE LOCAL AGENCY FORMATION COMMISSION

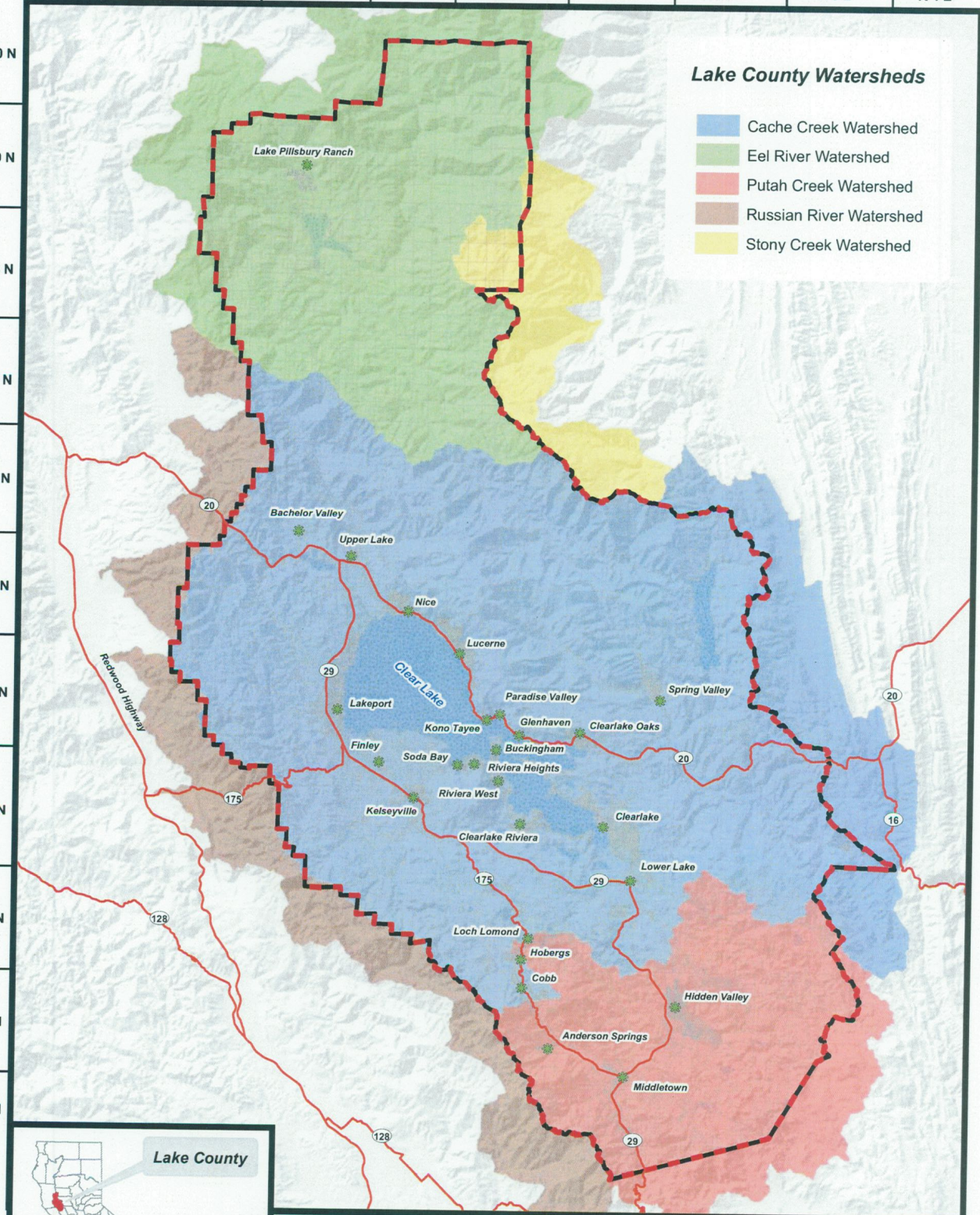
LAKE COUNTY WATERSHED PROTECTION DISTRICT

R 11 E | R 10 E | R 9 E | R 8 E | R 7 E | R 6 E | R 5 E | R 4 E

T 20 N
T 19 N
T 18 N
T 17 N
T 16 N
T 15 N
T 14 N
T 13 N
T 12 N
T 11 N
T 10 N

Lake County Watersheds

- Cache Creek Watershed
- Eel River Watershed
- Putah Creek Watershed
- Russian River Watershed
- Stony Creek Watershed



Legend

- Communities
- Watershed Protection District and County Boundary
- Sphere of Influence Boundary
- Highways
- Parcels
- Water Bodies



Source: Lake County LAFCo

0 3 6 12 Miles

Map Created 3/2/2016